

HIGHWAYS MBC 10



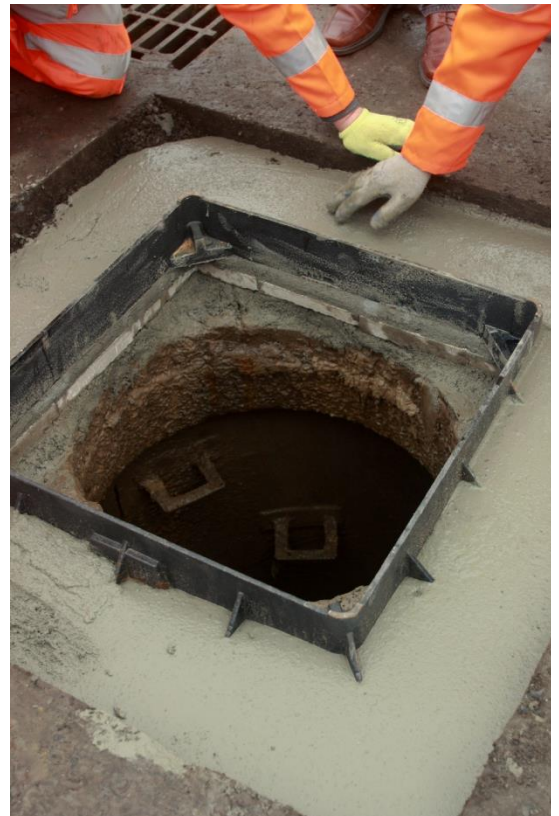
OPEN TO
TRAFFIC IN **90**Min **HAPAS**



Product Sheet 4

Larsen Highways MBC10 is a HAPAS approved rapid strength concrete specifically formulated for use as backfill of carriageway and reinstatement of ironwork, up to and including installation Group 4 of BS EN 124-1 : 2015 where rapid trafficking is required. It is ideal for haunching reinstatements, as well as post, sign, fence and barrier erection. MBC10 can also be mixed to a trowelable consistency for bedding or repair applications. It is manufactured from a controlled blend of specially selected cements, additives and aggregates to give exceptionally high early compressive and flexural strengths.

**HAPAS APPROVED
SETS IN 15MIN
>20MPa WITHIN 2 HOURS
WATERPROOF PACKAGING
SHRINKAGE COMPENSATED
COMPLIES WITH DMRB HD27/15**



TECHNICAL INFORMATION

PRODUCT INFORMATION	
FORM	Granular
COLOUR	Grey
MAX AGGREGATE	10mm
HAZARD INFORMATION:	IRRITANT – Contains Cement. Consult Safety Datasheet before use
CLEANING:	Clean tools, equipment, etc. using warm water. Mechanical means are necessary when the product has set.
PACKAGING:	25 kg 2 part poly-bag
STORAGE INSTRUCTIONS:	Store unopened containers in a cool, dry location away from extremes of temperature
SHELF LIFE:	6 months in unopened manufacturer's containers
APPLICATION INFORMATION	
WATER DEMAND	1 - 2L per 25kg bag
BED THICKNESS	30-250mm
WORKING TIME:	5-10 min
SETTING TIME:	10-20 min
TIME TO TRAFFIC:	Vehicle Traffic - after 1½ - 2 hours (depending on site conditions)
COVERAGE:	25 kg will produce approx 12L of mortar
PERFORMANCE INFORMATION	
DENSITY	2200kg/m ³
COMPRESSIVE STRENGTH	2hr - >20MPa 28 day - >60MPa
FLEXURAL STRENGTH	28day - >6MPa

DIRECTIONS FOR USE

PREPARATION

All substrates must be suitable to receive the bedding as per current good working practices. All substrates should be clean and thoroughly sound and free from oils, grease, dust, loose particles or any other contaminants which may interfere with adhesion. They should be pre-soaked but free from standing water. For improved bond strengths, for example when patch filling, use Larsen Streetscape PS.

MIXING

Mix the contents of the inner cement bag with the aggregate and then add 1 – 2L of water per 25kg bag to achieve the desired workability. Mix by hand or with a suitable mechanical mixer. Variations in the moisture content of the damp aggregate may result in slight variations in mixing water required to achieve the same consistency. Should more water be added to achieve a more pliable workability, the hardened properties of the product will be reduced. Highways MBC10 will set in 5-10 minutes, do not try to remix or wet-up MBC10 which has 'gone off'.

APPLICATION

Depending on the mixed consistency, MBC10 can be trowelled or poured into place. It can be applied in a bed of 30 -250mm in a single pass and it is recommended that placing is complete within 5 min of mixing. When backfilling prior to resurfacing, typically apply to not more than 60mm below the finished level. A tack coat is normally recommended before resurfacing and this can be applied as soon as the MBC10 has set.

RESTRICTIONS

Speed of set and strength development will be affected by site and substrate temperature. In warm conditions mixing with cold water will extend the setting time. In cold conditions mixing with warm water will reduce the setting time. Protect freshly placed material from freezing until set.