



# SILO MORTAR

NORTHERN IRELAND

---

**028 9077 4000**

REPUBLIC OF IRELAND

---

**01 8348255**

GREAT BRITAIN

---

**028 9053 5409**

EMAIL

---

[enquiry@larsenbuildingproducts.com](mailto:enquiry@larsenbuildingproducts.com)

WEB

---

[www.larsenbuildingproducts.com](http://www.larsenbuildingproducts.com)

**AVAILABLE  
NATIONWIDE**

**Larsen Building Mortar available throughout the UK and Ireland.** Available in both Silo Bulk and 1 Tonne bags.





**LARSEN**

**INDUSTRY  
RECOGNISED**



**Northern Ireland**  
essential materials  
sustainable solutions

# MORTAR COLOURS

Limestone White  
Ultra White  
Heather  
Yorkstone  
Charcoal  
Grey



# SILO MORTAR

## SPECIFICATION

EASY TO USE  
GENERAL PURPOSE  
BS5268-3 TYPE III MORTAR  
BS EN 998-2 M4 (PRESCRIBED)

Larsen Silo Mortar is a factory controlled, prescribed general purpose 6:1 masonry mortar for external use in elements subject to structural requirements. It is a blend of specially graded, Kiln dried sands, Portland cement and air entraining agents. It is suitable for **building, bedding and pointing brick, block and stone.**

For more information  
contact our technical department

NORTHERN IRELAND  
028 9077 4000

REPUBLIC OF IRELAND  
01 8348255

GREAT BRITAIN  
028 9053 5409

# SILO BENEFITS

The **benefits of the dry silo mortar system**, over other methods of providing mortar to site, **are numerous**. They include:

- Mortar containing a **guaranteed cement content**.
- Controlled air and workability aid contents, contained within **guaranteed mix proportions**.
- A durable mortar is **less susceptible to frost attack**.
- **Superior resistance** to rain penetration.
- Accurate and controlled pigment addition, resulting in **superior colour consistency** for coloured mortar applications.
- **No need to use retarders**, as the material only needs to be produced from the silo when it is required.
- As much or as little can be produced from the silo as required, from a bucketful to a tubful, **meaning wastage is kept to a minimum**.
- **Workability of the mortar can be adjusted** to meet any on site masonry application, resulting in increased productivity.
- Dry material for mixing is **always available** from the silo whenever required – **eliminating downtime and increasing productivity**.

# SILO BENEFITS

The **benefits of the dry silo mortar system**, over other methods of providing mortar to site, **are numerous**. They include:

- Only a relatively small area on site is needed for the silo, meaning **space is effectively utilised**.
- Mortar being produced at the press of a button means **labour intensity and health and safety concerns are reduced**.
- Material stored in the silo is not exposed to the elements, therefore **retaining its integrity, reducing wastage and removing the chance of opportunist theft**.
- Large quantities of mortar are delivered via bulk powder tanker, **which reduces on site traffic movements significantly**.
- Silo provision means that site **presentation is considerably improved**.
- The **noise produced by the silo mixer unit is minimal**, particularly advantageous where sites are located **close to schools, hospitals and existing residential areas**.

# MORTAR SPREAD RATES

## BUILDING MORTAR

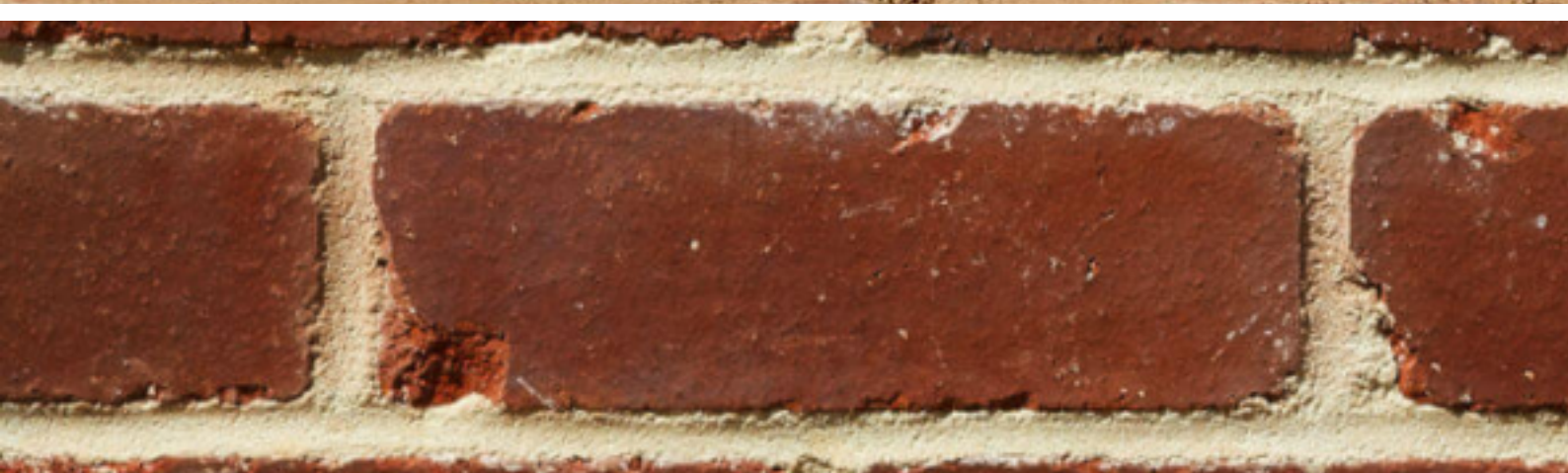
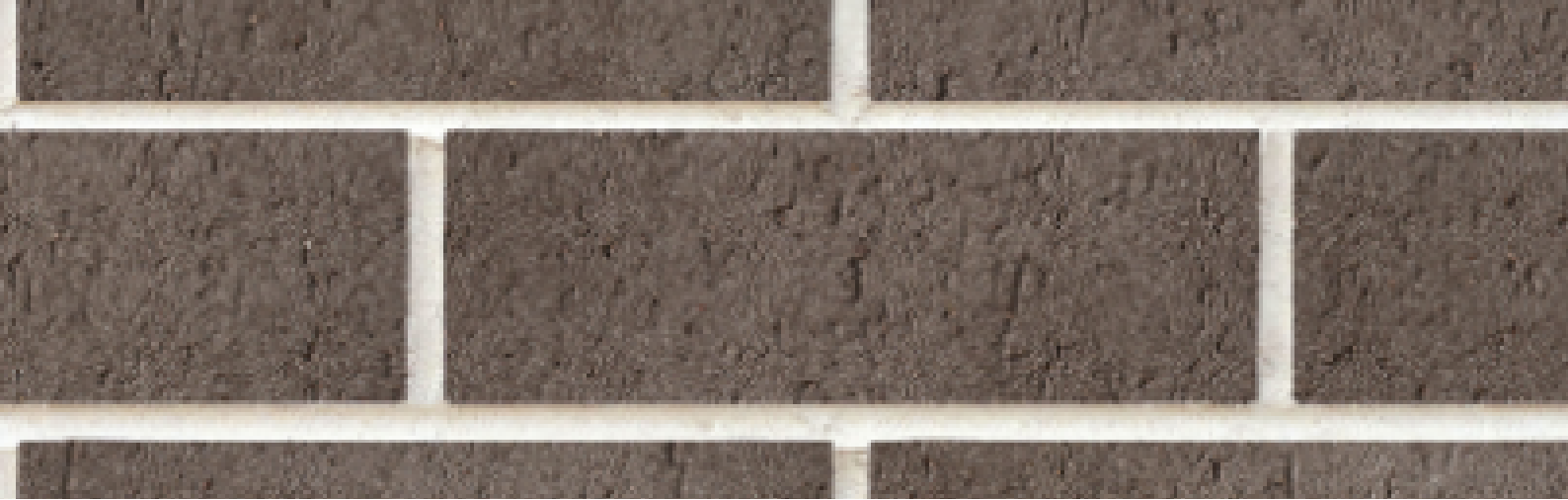
1 tonne of building mortar when mixed will lay (10mm joint):

APPROX 1300NO.	STANDARD BRICKS
APPROX 650NO.	100MM STANDARD BLOCK ON EDGE
APPROX 350NO.	100MM STANDARD BLOCK ON FLAT

## PLASTERING MORTAR

1 tonne of plastering mortar when mixed will cover:

10MM THICK	69M <sup>2</sup> APPROX
12MM THICK	55M <sup>2</sup> APPROX
15MM THICK	34M <sup>2</sup> APPROX
24MM THICK	27M <sup>2</sup> APPROX



# MORTAR COLOURS

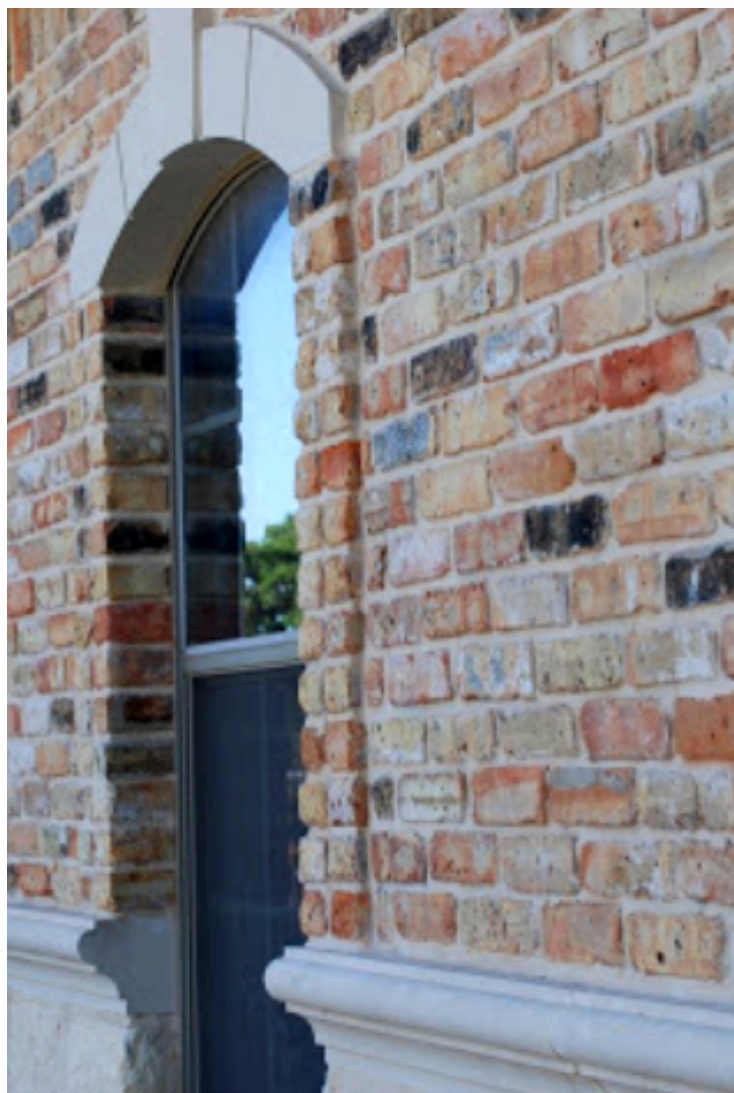
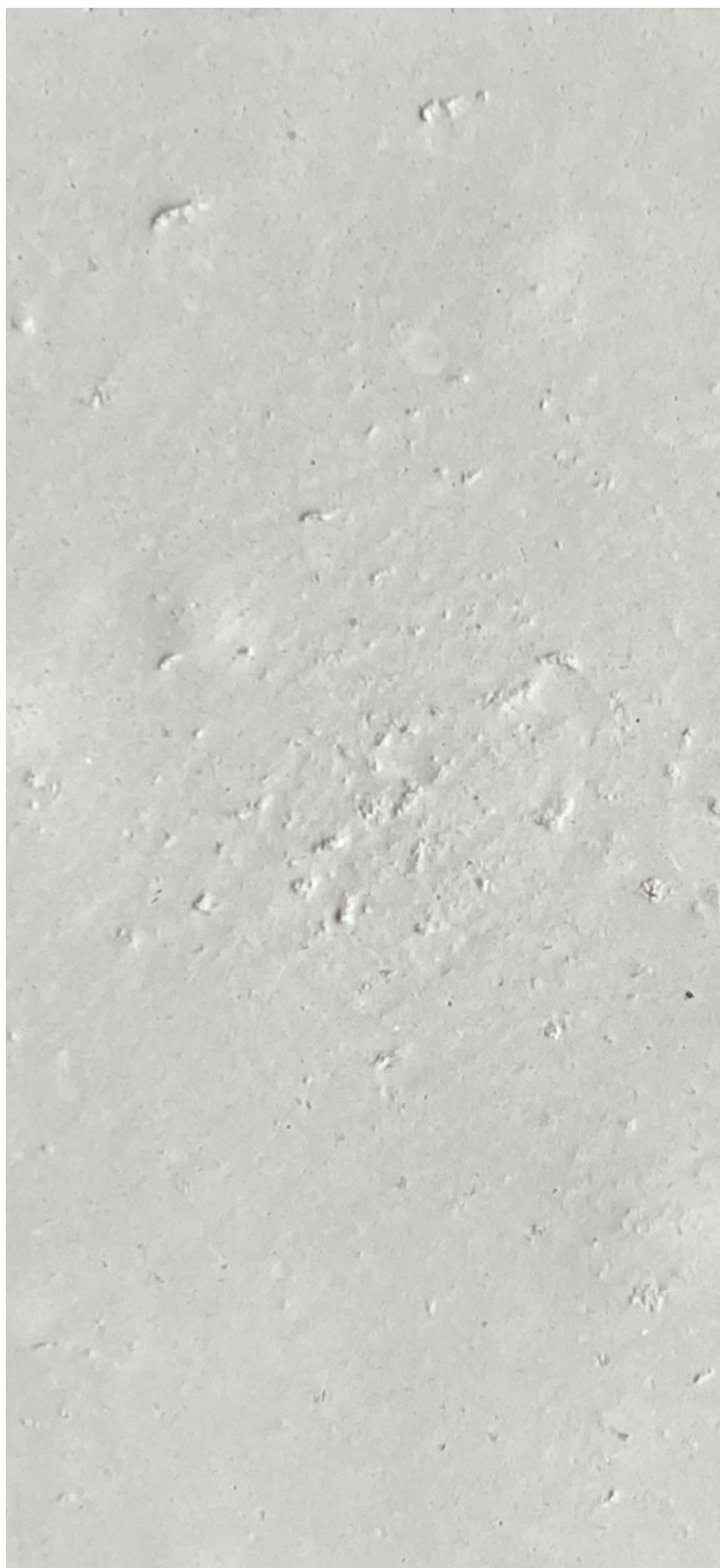
Larsen Silo Mortar is readily available in six different colours.

# YORKSTONE

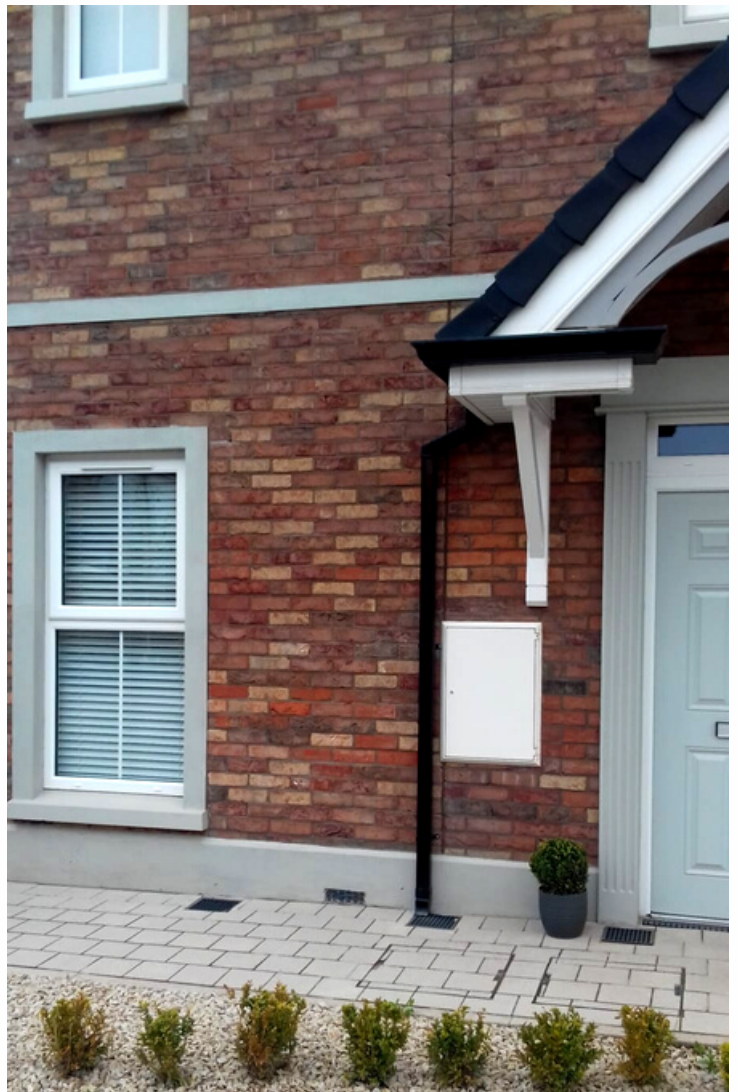


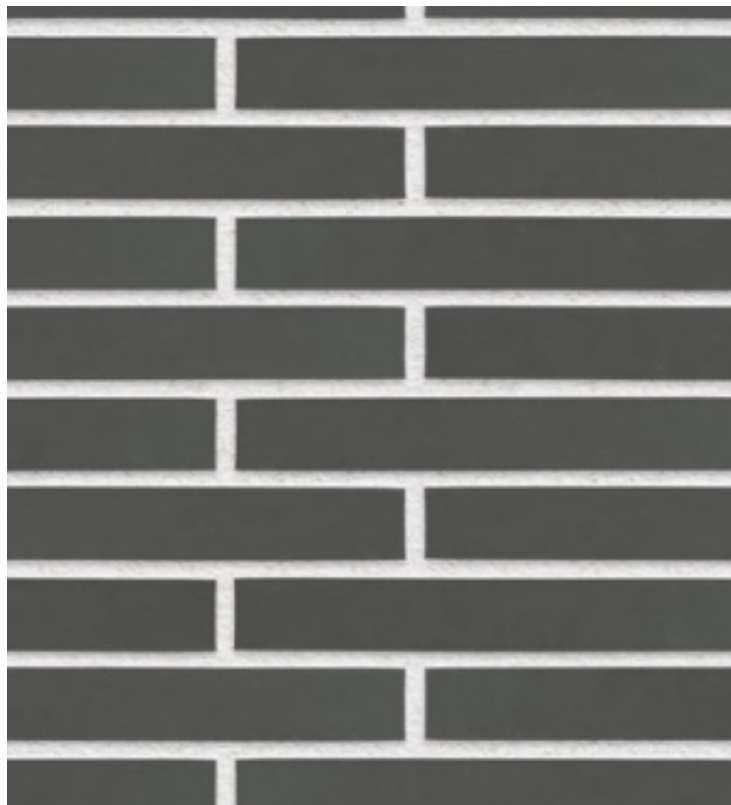


# LIMESTONE WHITE



# HEATHER

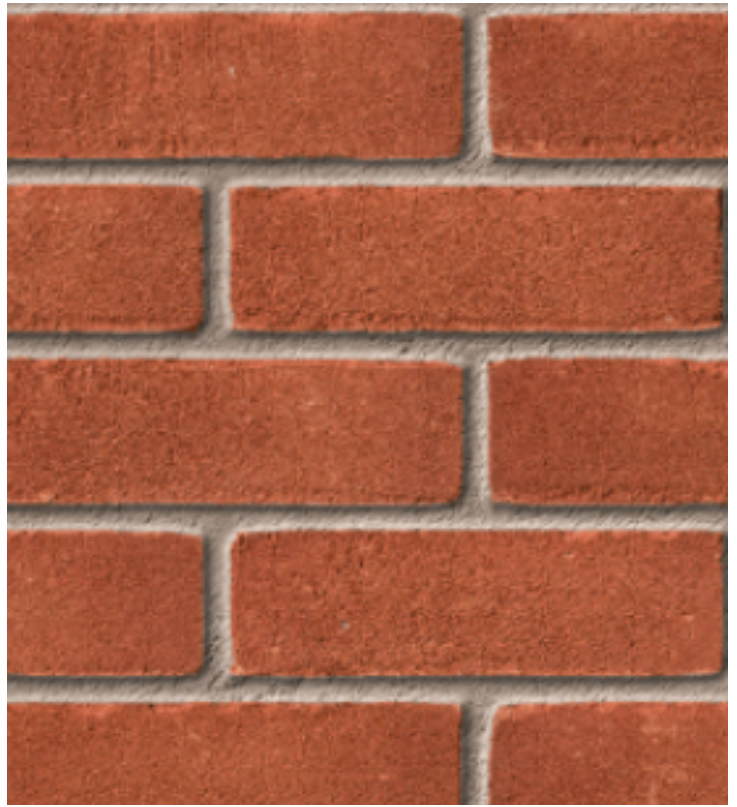
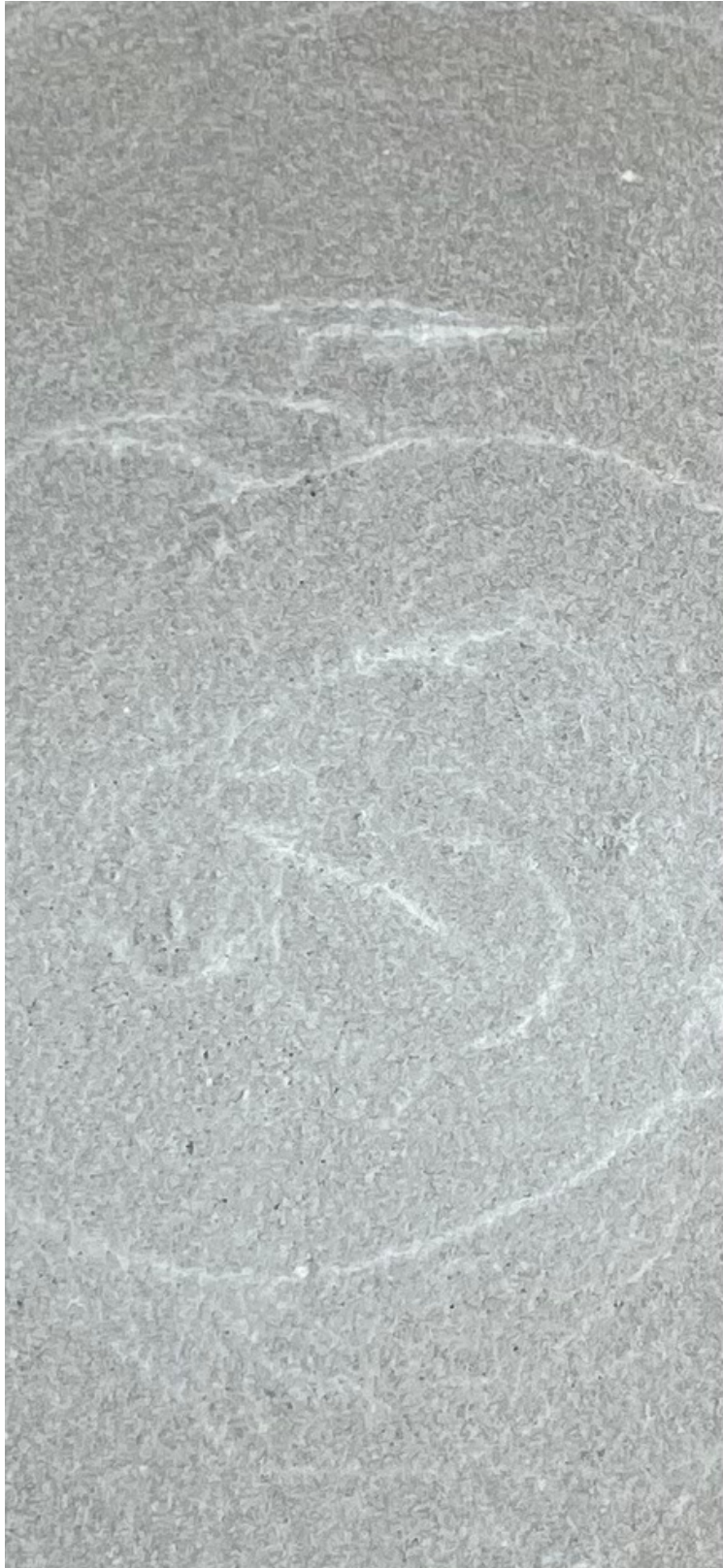


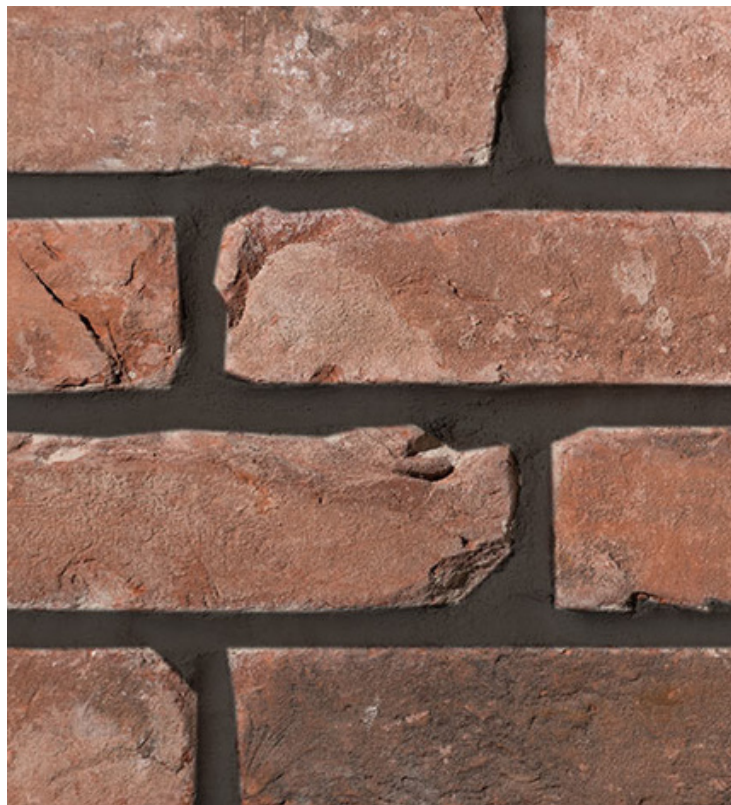


# ULTRA WHITE

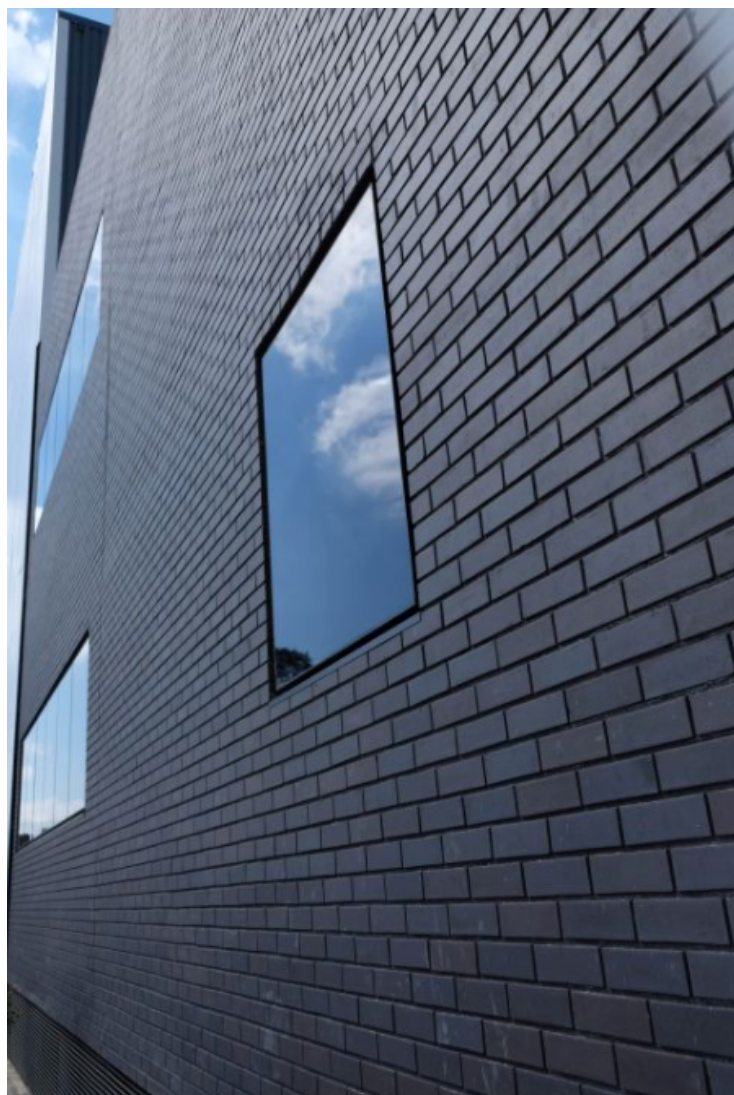


# GREY





# CHARCOAL





# TECHNICAL SUPPORT

**Our wide experience of the entire construction process draws on the expertise and breadth of knowledge gained over the last 45 years to provide an unsurpassed level of technical back-up and know-how.**



For more information  
**contact our technical department**

NORTHERN IRELAND  
028 9077 4000

REPUBLIC OF IRELAND  
01 8348255

GREAT BRITAIN  
028 9053 5409

# PLASTERING MORTAR

Larsen Silo Plastering Mortar is a factory produced **high quality General Purpose Render** specially designed to EN 998-1 for multi-coat hand application. It is manufactured from a controlled blend of sands, cements, and additives to give a **high quality rendering product**, which is suitable for **use in external rendering and internal plastering**.



For more information  
contact our technical department

NORTHERN IRELAND  
028 9077 4000

REPUBLIC OF IRELAND  
01 8348255

GREAT BRITAIN  
028 9053 5409



**LARSEN**

## QUALITY GUARANTEE

Larsen's quality policy ensures all products are manufactured to exacting quality and performance standards. Stringent testing by qualified technicians ensures products meet the requirements of national standards, harmonized European standards or Larsen's internal specifications before despatch.

## ANY QUESTIONS?

Get in touch with our  
team today

WEB  
[www.larsenbuildingproducts.com](http://www.larsenbuildingproducts.com)

EMAIL  
[enquiry@larsenbuildingproducts.com](mailto:enquiry@larsenbuildingproducts.com)

NORTHERN IRELAND  
028 9077 4000

REPUBLIC OF IRELAND  
01 8348255

GREAT BRITAIN  
028 9053 5409